

Willamette River | Portland

# GROUP EXPERIENCES

## 2025





## Dining Cruises | Group Pricing



### DINNER CRUISE



PS

**Jan – Apr & Oct – Nov**

*Daily*

6:00 pm – 8:30 pm

**May – Sept & Dec**

*Daily*

7:00 pm – 9:30 pm

2.5-hour cruise  
3-course plated dinner  
(bread, house salad,  
entrée, house dessert)

**All Ages | \$81**

+22% gratuity & tax (\$99.23)

*retail value*  
(\$172.73)

### NORTHWEST LUNCH CRUISE



PS

**January – November**

*Monday – Saturday*

11:30 am – 1:30 pm

**December**

*Monday – Friday*

11:30 am – 1:30 pm

2-hour cruise  
2-course plated lunch  
(bread, entrée, house dessert)

**Adult | \$57**

+22% gratuity & tax (\$69.83)

*retail value*  
(\$129.38)

**Youth (1–12) | \$34.50**

+22% gratuity & tax (\$42.27)

**Infant (0–1) | \$10**

+22% gratuity & tax (\$12.25)

### CHAMPAGNE BRUNCH CRUISE



PS

**January – November**

*Sunday*

11:30 am – 1:30 pm

**December**

*Saturday & Sunday*

2:00 pm – 4:00 pm

2-hour cruise  
Brunch buffet  
Champagne, mimosas,  
sparkling cider, tea and coffee

**Adult | \$65**

+22% gratuity & tax (\$79.63)

*retail value*  
(\$147.23)

**Youth (1–12) | \$39.50**

+22% gratuity & tax (\$48.39)

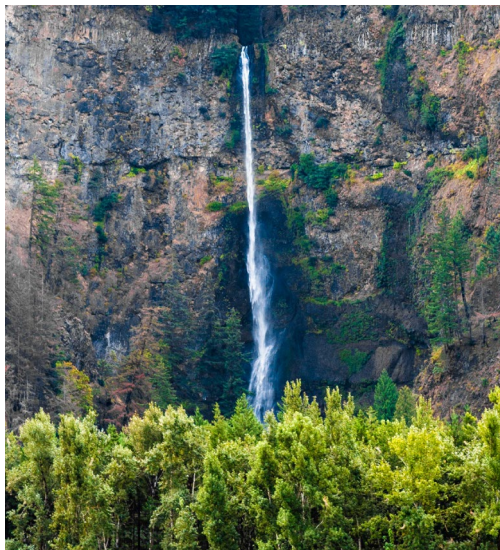
**Infant (0–1) | \$10**

+22% gratuity & tax (\$12.25)

### Meal Cruises Include

- Complimentary coffee, soda and hot tea (\$6 savings)
- Reserved window tables (upgrade fee waived)
- Narration on outer decks or on phone app
- Complimentary bus parking at our SE location

## Sightseeing & Explorer Jetboat | Group Pricing



### SEVEN WONDERS OF THE GORGE



EX

**June 21 – September**

*Wednesday – Monday*

2:00 pm – 5:30 pm

3.5-hour cruise on a jetboat,  
live and recorded narration

**All Ages | \$62 + tax (\$62.31)**

### BIGFOOT JETBOAT ADVENTURES



EX

**June 21 – September**

*Monday, Wednesday, Saturday*

9:00 pm – 12:30 pm

3.5-hour cruise on a jetboat,  
live and recorded narration

**All Ages | \$62 + tax (\$62.31)**

### HAPPY HOUR SIGHTSEEING



PS

**June & September**

*Friday – Sunday*

3:30 pm – 5:00 pm

**July – August**

*Daily*

3:30 pm – 5:00 pm

1.5-hour cruise  
Narrated sightseeing cruise  
Full service bar available  
Snacks & apps available

**All Ages | \$28 + tax (\$28.14)**



### SIGHTSEEING ON MEAL CRUISES

PS

**Daytime | 2-hour**

**Adult | \$38 + tax (\$38.19)**

**Youth | \$25 + tax (\$25.13)**

**Infant (0–1) | \$10 + tax (\$10.05)**

**Evening | 2.5-hour**

**Adult | \$54 + tax (\$54.27)**

**Youth | \$30 + tax (\$30.15)**

**Infant (0–1) | \$10 + tax (\$10.05)**



## Join us for the Holidays | Group Pricing



### SLEIGH RIDES ON THE EXPLORER



EX

Schedule TBA

1.5-hour cruise on Explorer Jetboat  
during the Christmas Ship Parade,  
hot cocoa, cookies, tour  
guide and blankets

**All Ages | \$54 + tax (\$54.27)**

### CHRISTMAS SHIP DINNER



PS

Schedule TBA

2.5-hour cruise, fresh baked bread,  
house salad, entrée, house dessert,  
live entertainment

**All Ages | \$89**

+22% gratuity & tax (\$109.03)

### CINNAMON BEAR BREAKFAST



PS

November 29 – 30

9:30 am – 11:30 am

**December**

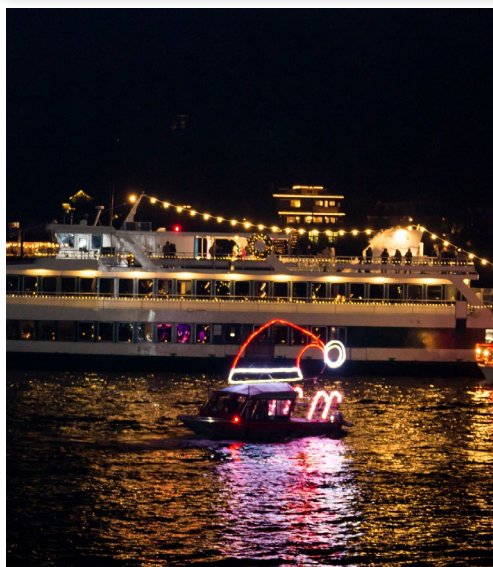
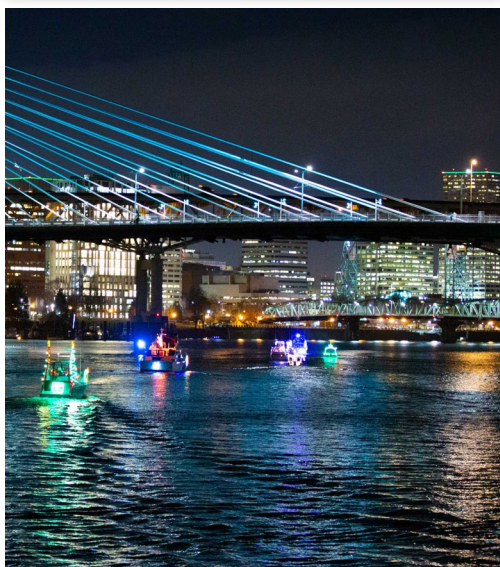
**6 – 7, 13 – 14, 20 – 24, 26 – 27**

9:30 am – 11:30 am

2-hour cruise, plated breakfast,  
hot cocoa, orange juice, coffee,  
hot tea, souvenir photo, character  
storytelling and autograph  
sessions, private reserved table  
and service gratuity

**Adult | \$62 + tax (\$62.31)**

**Youth (0–12) | \$44 + tax (\$44.22)**



## Enhance your cruise with these upgrades

*Please Note: Appetizers are pre-order only and may not be available on board. A 22% service gratuity will be added to all food and beverage.*



### ALL-INCLUSIVE BAR PACKAGES



#### HAWTHORNE PACKAGE

**(\$24 PER PERSON)**

Includes all non-alcoholic beverages, beer, and house wine for up to 2 ½ hours.

#### MORRISON PACKAGE

**(\$30 PER PERSON)**

Includes all non-alcoholic beverages, beer, wines by the glass and well drinks for up to 2 ½ hours.

#### MARQUAM PACKAGE

**(\$37 PER PERSON)**

Includes all non-alcoholic beverages, beer, wines by the glass, all spirits and cocktails for up to 2 ½ hours.

**DOES NOT INCLUDE 22% SERVICE CHARGE.**

#### HOSTED DRINK TICKET PRICING

*Drink tickets are used to monitor the number of drinks hosted. Drink tickets are prepaid and non-refundable. The cruise manager will issue the drink tickets to the group contact on board.*

##### OPTION 1 | \$9 per ticket

All non-alcoholic beverages (including mocktails), beer & house wine

##### OPTION 2 | \$11 per ticket

All non-alcoholic beverages (including mocktails), beer, wine by the glass & well drinks

##### OPTION 3 | \$13 per ticket

All non-alcoholic beverages (including mocktails), beer, wine by the glass, well/premium spirits & cocktails

### APPETIZERS • \$30 EACH



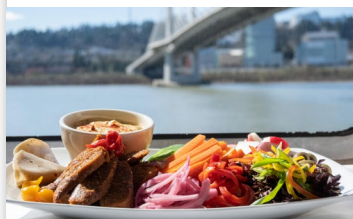
#### SEAFOOD PLATE

Smoked lox, steelhead, seared tuna, mussels and prawns. Served with crostini, cream cheese, lemon and cocktail sauce.



#### CHEESE SAMPLER PLATE

A curated selection of local Northwest cheeses, chosen for flavor and presentation. Served with crostini and fruit.



#### MEDITERRANEAN PLATE

Vegetarian and vegan friendly platter that includes a variety of vegetables, Beyond hot italian sausage slices, housemade hummus and pita.

### SHRIMP COCKTAIL • \$12 EACH



Five tiger prawns served with chef's recipe cocktail sauce.

### DESSERTS • \$7 EACH



Upgrade your house dessert to choose from a premium dessert selection on board, including chocolate cake, lemon berry vanilla cake, among others.

### BOARDING PHOTO • \$15 EACH



Your visit will be captured by our photographer as you arrive at our boarding ramp.



# Portland Spirit CRUISE ROUTE

## WILLAMETTE RIVER

### BRIDGE LEGEND



Steel Bridge | 1912



Burnside Bridge | 1926



Morrison Bridge | 1958



Hawthorne Bridge | 1910



Marquam Bridge | 1966



Tilikum Crossing Bridge | 2015



Ross Island Bridge | 1926



Sellwood Bridge | 1925/2016



Railroad Bridge | 1908

map not to scale

