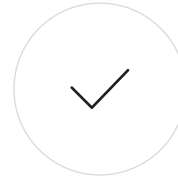


04.07.2025

**FISHERS ISLAND FERRY DISTRICT
MUNNATAWKET REPLACEMENT
VESSEL DESIGN.**



DESIGN PROJECT STAGES



KICK OFF

September 2024

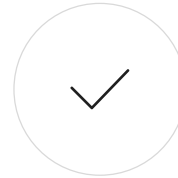
Onsite meeting and project ramp up.



CONCEPT DESIGN

November 2024

Develop Arrangement, overall vessel size and mechanical architecture.



PRELIMINARY DESIGN

February 2025

Preliminary Engineering calculations, hull form, propulsion powering, stability, structure.



CONTRACT DESIGN

Ongoing, Target Completion June 2025

Design refinement, adding detail, mechanical systems, outfitting.

GA

Length Overall 170 ft

Molded Beam 41 ft

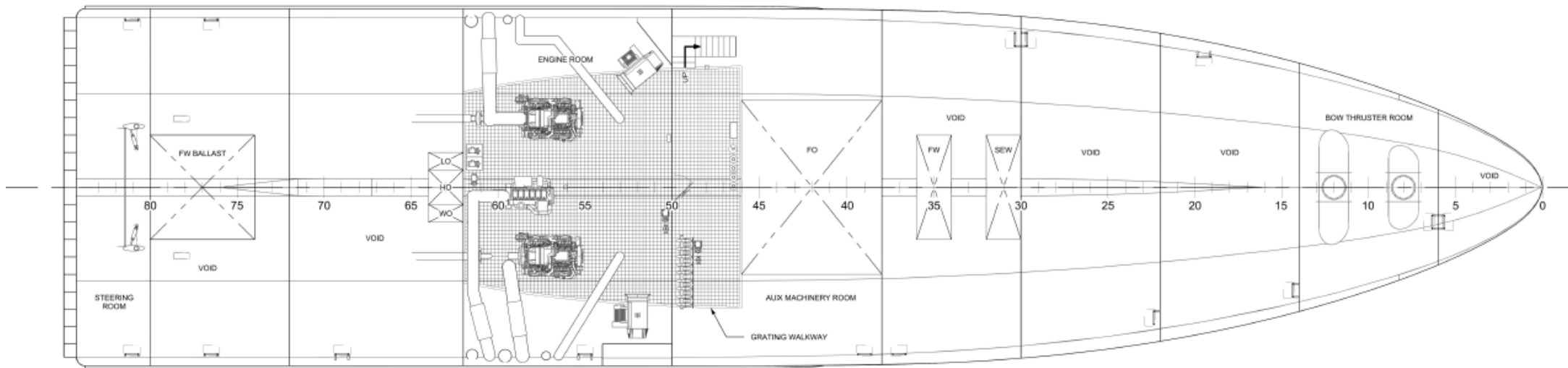
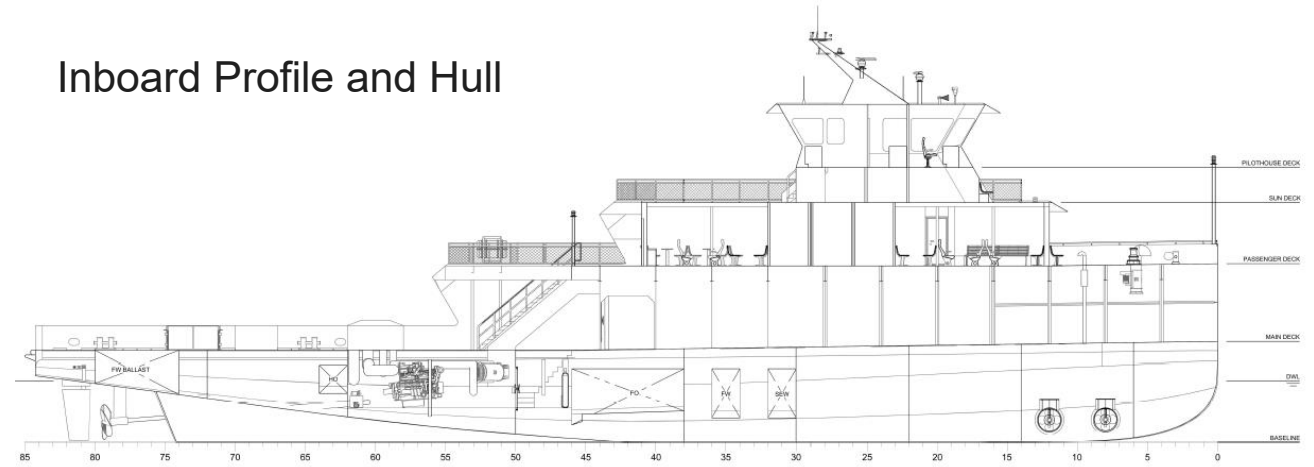
Molded Depth 13 ft

PRINCIPAL DIMENSIONS
LENGTH OVERALL (LOA): 170 ft
MOLDED BEAM (B): 41 ft
MOLDED DEPTH (D): 13 ft
DESIGN DRAFT (DWL): 8 ft 9 in
PASSENGER CAPACITY: 180 PAX
INTERIOR SEAT CAPACITY: 150 PAX
EXTERIOR SEAT CAPACITY: 58 PAX



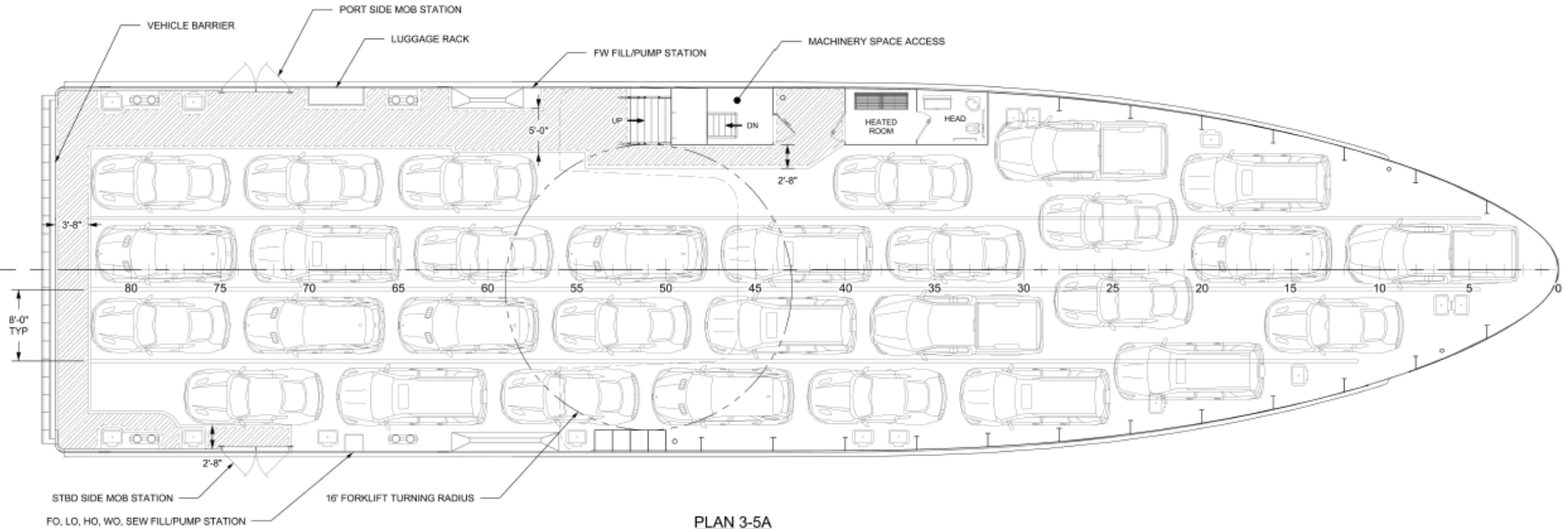
GA

Inboard Profile and Hull



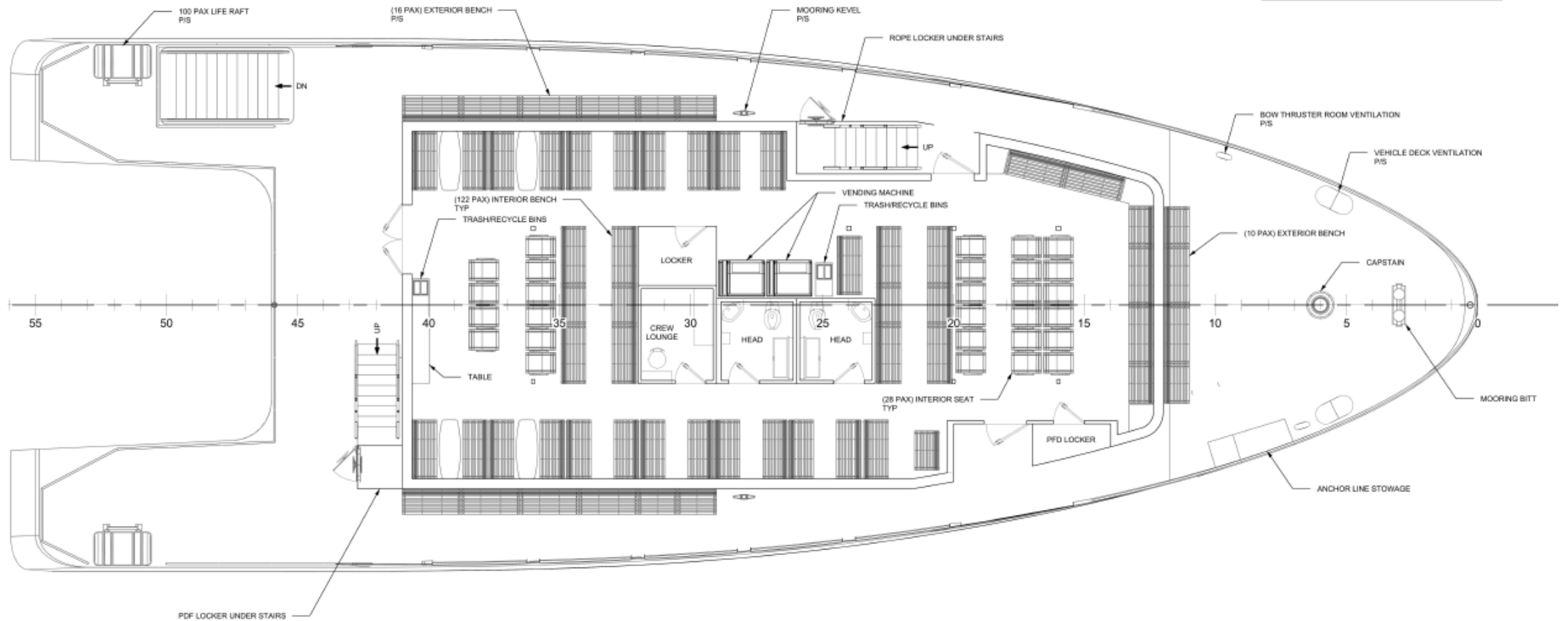
GA

Main Deck



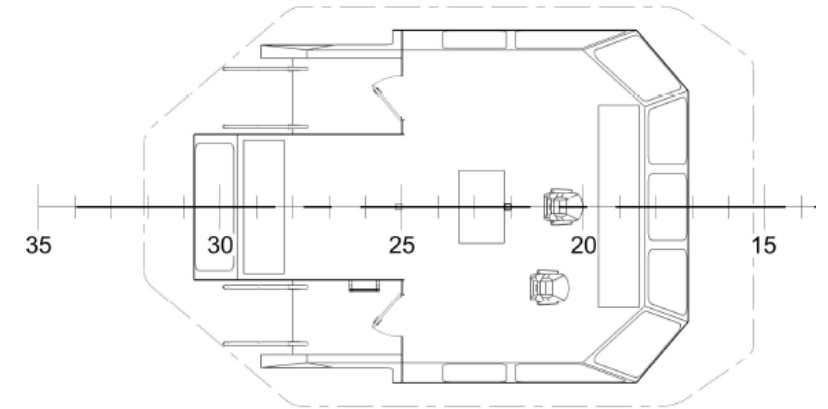
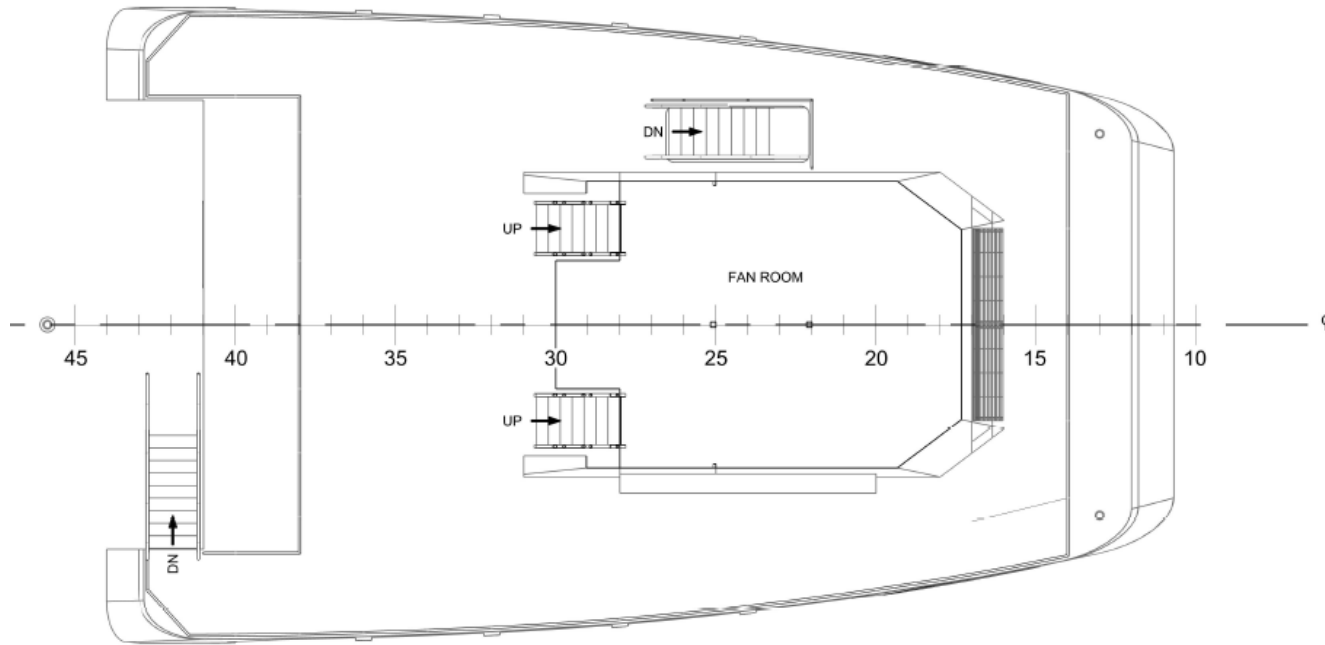
GA

Passenger Deck



GA

Sun Deck and Pilothouse



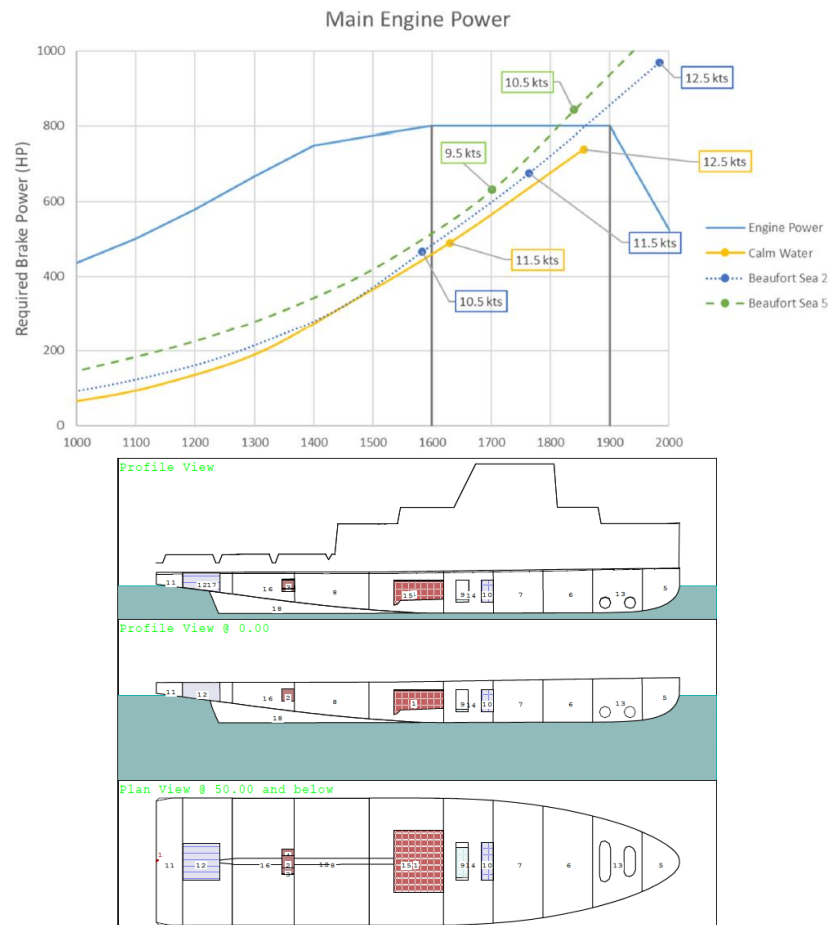
DESIGN STATUS

ENGINEERING

Preliminary calculations establishing major machinery and hull form requirements.

Preliminary Reports for:

- Speed and Power
- Maneuvering
- Noise and Vibration
- Weight
- Stability
- Structure Scantlings
- Electrical Loads



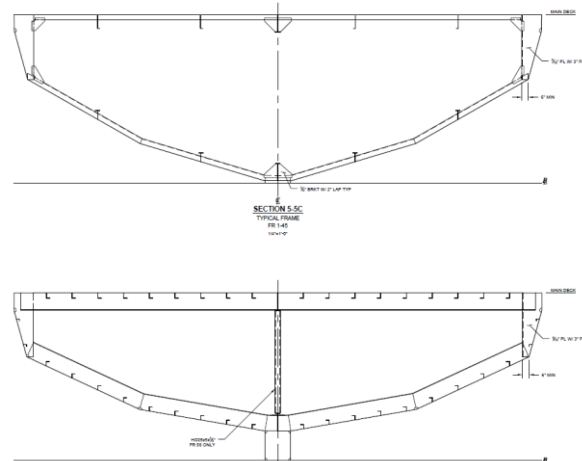
PROPULSION POWER
Two 800 HP Main Engines
5 ft Diameter Propellers

WEIGHT AND STABILITY

450 LT Lightship weight
620 LT Full Load Displacement with 30 cars
3.5 ft to 5.25 ft Stern Freeboard Range

STRUCTURE

Preliminary Hull and Superstructure Scantlings.
Steel construction
Less than 100 GRT



000 Design and Support	
Technical Specification	24147.01-010-01
Engineers Cost Estimate	24147.01-043-01
Speed and Powering	24147.01-050-01
Maneuvering Analysis	24147.01-050-02
Lines Plan	24147.01-051-01
General Arrangement	24147.01-060-01
Sight Lines	24147.01-060-02
Propulsion Study	24147.01-062-01
Tonnage Estimate	24147.01-070-01
Noise and Vibration Report	24147.01-073-01
Emergency Evacuation Plan	24147.01-077-01
Fire Zone Plan	24147.01-077-02
Stability Analysis	24147.01-079-01
Weight Estimate	24147.01-096-01
Incline Procedure	24147.01-097-01
Renderings	24147.01-098-01
100 Structure	
Scantling Calculations	24147.01-100-01
FEA (if conducted)	24147.01-100-02
Docking Plan	24147.01-101-01
Welding Schedule	24147.01-102-01
Hull Structure Drawing	24147.01-110-01
Tank Drawing	24147.01-125-01
Superstructure Drawing	24147.01-150-01
Structural Closures arrangement and sp	24147.01-167-01
Masts	24147.01-170-01
Equipment Foundations	24147.01-180-01
200 Propulsion	
Machinery Arrangement	24147.01-200-01
ME Shafting Arrangement	24147.01-243-01
300 Electrical	
Electrical Load Analysis	24147.01-301-01
Primary cable-way routing	24147.01-304-01
AC and DC One Line	24147.01-320-01
Lighting Plan	24147.01-330-01

400 Navigation and Communication	
Bridge Arrangement	24147.01-400-01
Mast and Antenna Arrangement	24147.01-400-02
Navigation Light Arrangement	24147.01-422-01
500 Systems	
Vents Fills and Sounds	24147.01-506-01
HVAC	24147.01-512-01
Machinery Space Ventilation	24147.01-513-01
Fire Main	24147.01-521-01
Scuppers and Deck Drains	24147.01-526-01
Black and Gray Water	24147.01-528-01
Bilge	24147.01-529-01
Potable Water	24147.01-533-01
F/W Cooling	24147.01-536-01
Fuel	24147.01-541-01
Lube Oil	24147.01-542-01
Waste Oil	24147.01-543-01
Compressed Air	24147.01-551-01
Fixed Fire Extinguishing	24147.01-555-01
Hydraulics	24147.01-556-01
Steering	24147.01-561-01
Exhaust	24147.01-563-01
Maneuvering (Thrusters)	24147.01-568-01
Anchoring	24147.01-581-01
Mooring	24147.01-582-01
Fire and Safety	24147.01-583-01
600 Outfitting	
Passenger Space Arrangement	24147.01-600-01
Vehicle Deck Arrangement	24147.01-600-02
Hull Marking	24147.01-602-01
Finish Material Plan	24147.01-620-01
Ladder and Stair Arrangement	24147.01-623-01
Non-structural door arrangement and s	24147.01-624-01
Window and Window wiper details	24147.01-625-01
Cathodic Protection	24147.01-633-01
Insulation Plan	24147.01-635-01

CONTRACT DESIGN

Current Ongoing Effort

- Incorporate feedback from Preliminary Design Review
- Continue design refinement
- Adding detail
- Develop additional drawings and reports
- Define vessel systems and outfitting

THANK YOU.

Stephen White
Principal Naval Architect
T 401.406.8582
sdwhite@glosten.com

